



cholam

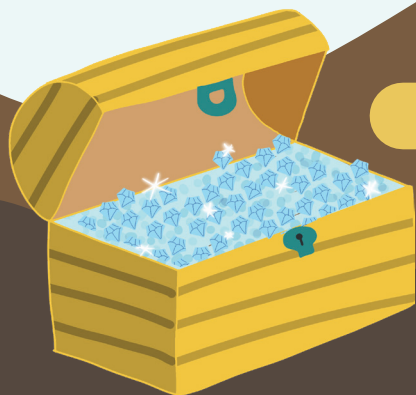
SAMPLE



STUDENT GUIDEBOOK



Read the cholam chasser syllables in alphabetical order to help Tova collect diamonds.



טובה מוצאת יהלום

ח

ה

ע

ש

צ

ק

ר

פ

פ

מ

ל

ע

נ

ם

כ

ב





Listen to the word and fill in the missing syllable.

<p>אז <input type="text"/></p> <p>tzon (sheep)</p>	<p>ם <input type="text"/></p> <p>yom (day)</p>
<p>ר <input type="text"/></p> <p>lof (drum)</p>	<p>ר <input type="text"/></p> <p>shofar</p>
<p>הל <input type="text"/></p> <p>ohel (tent)</p>	<p>בע <input type="text"/></p> <p>keva (hat)</p>
<p>רה <input type="text"/></p> <p>Torah</p>	<p>נה <input type="text"/></p> <p>yonah (dove)</p>

LETTER + NIKUDAH BANK

וּ וּ זֶ פֶּ זֶ

Step 4

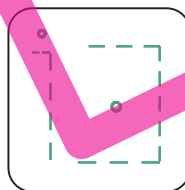
WRITING SYLLABLES

Listen to the word and fill in the missing syllable.

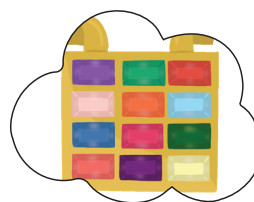
kos (cup)



ס



חֶשֶׁן



חֵלוֹם

חֹפֶרֶת

יְהֵלוֹם



טוֹבָה





Check off the body parts each animal has.



אֲרִיָּה	חֲמֹר	דְּבוּרָה	שׁוֹר	דָּג
				

SAMPLE

דָּב	יוֹנָה	קוֹרָה	
			
			 רֶגֶל
			 זָנָב
			 לָשׁוֹן
			 כַּנָּף
			 אָזֵן

six rings

שֵׁשׁ טַבָּעוֹת



one ring

טַבָּעַת אֶחָת



seven blessings

שִׁבְעַת בְּרָכוֹת



one blessing

בְּרָכָה אֶחָת



eight cups

שְׁמוֹנֶה כּוֹסוֹת



one cup

כּוֹס אֶחָת



nine gifts

תִּשְׁעַת מַתָּנוֹת



one gift

מַתָּנָה אֶחָת

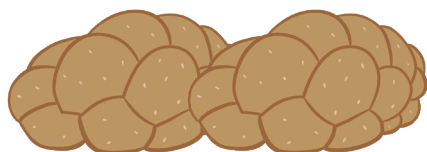


Read singular and plural phrases.



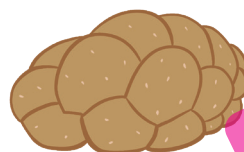
two challahs

שְׁתֵּי חָלוֹת



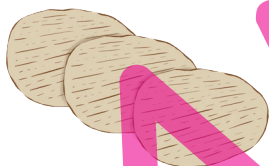
one challah

חֶלֶה אַחַת



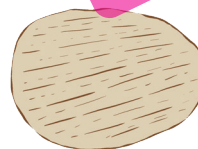
three matzot

שְׁלוֹשׁ מַצּוֹת



one matzah

מַצָּה אַחַת



four questions

אַרְבַּע שְׁאֵלוֹת



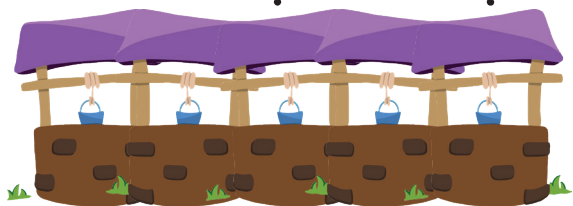
one question

שְׁאֵלָה אַחַת



five wells

חֲמִשָּׁה בְּאֵרוֹת



one well

בְּאֵר אַחַת



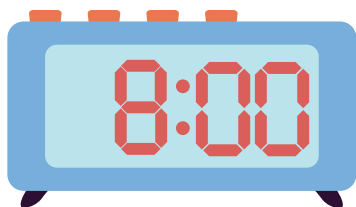


Match the phrase to its corresponding image.



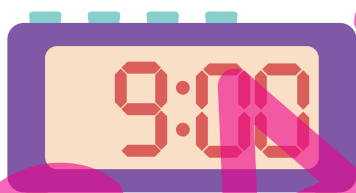
the hour is seven

הַשָּׁעָה שִׁבְעָה



the hour is twelve

הַשָּׁעָה שְׁתֵּים עָשָׂרָה



the hour is eleven

הַשָּׁעָה אֶחָת עָשָׂרָה



the hour is eight

הַשָּׁעָה שְׁמֹנֶה



the hour is nine

הַשָּׁעָה תֵּשַׁע



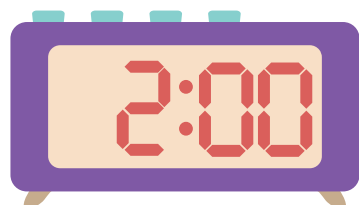
the hour is ten

הַשָּׁעָה עָשָׂר



the hour is two

הַשָּׁעָה שְׁתַּיִם



the hour is five

הַשָּׁעָה חֲמִשָּׁה



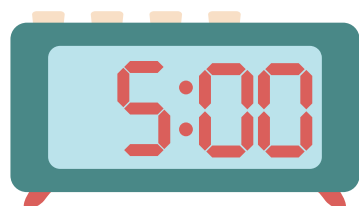
the hour is six

הַשָּׁעָה שֵׁשׁ



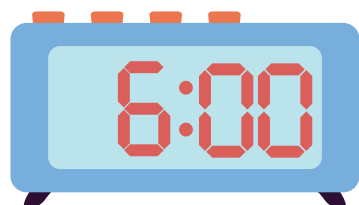
the hour is one

הַשָּׁעָה אֶחָת



the hour is three

הַשָּׁעָה שְׁלוֹשׁ

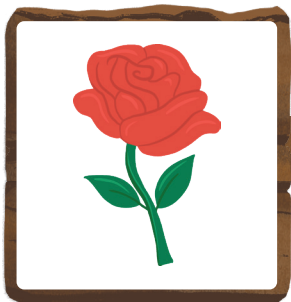


the hour is four

הַשָּׁעָה אַרְבַּע

Checkpoint!

Are you ready to move on? When you can read 7 out of 8 sentences and match them to the correct pictures, you can move on to the next section! Each word needs to be read in 4 seconds or less in order to move forward.



יָד שְׂמאל



תּוֹרָה חֲדָשָׁה



הַקֶּשֶׁת הַיָּפָה



הַיָּוֶרֶד הָאָדָם

How many
phrases did you
read and match
correctly?

FIRST TRY:

SECOND TRY:

THIRD TRY:



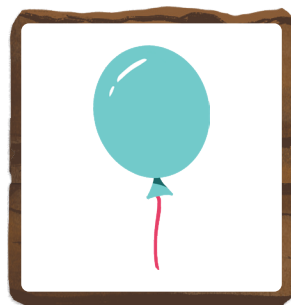
בָּלוֹן כָּחֹל



מְנוֹרַת הַכֶּסֶף



יָרַד גֶּשֶׁם

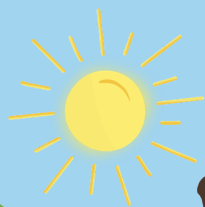


הָאֵהָל הַגָּדוֹל



Read phrases from the afternoon tefilot.

וְרַחֲמֵיוֹ עַל-כָּל-מַעֲשָׂיו...
 וְאַתָּה נֹתֵן-לָהֶם אֶת-
 אֲכֻלָּם... לְכָל-חַי רֶצוֹן...
 רֶצוֹן-יִרְאֵיוֹ יְעֲשֶׂה...



עֶרֶב

דָּב

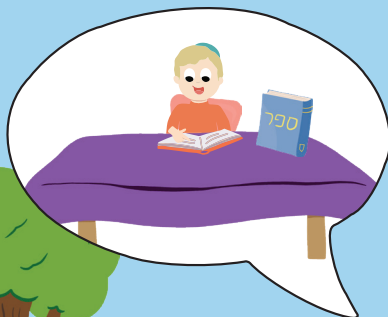


יוֹנָה



אֲשֶׁרִי יוֹשְׁבֵי בֵיתְךָ...
 בְּכָל-יוֹם אֲבָרְכְּךָ... דוֹר
 לְדוֹר יִשְׁכַּח מַעֲשֶׂיךָ...
 הַדֹּר כְּבוֹד הוֹדֶךָ...

דְּבוּרָה



אָהֶל



What is the prefix כּ?

כּ

is like a



on a



bending to the King of Kings.

כּ

is like the palm of a



כּ

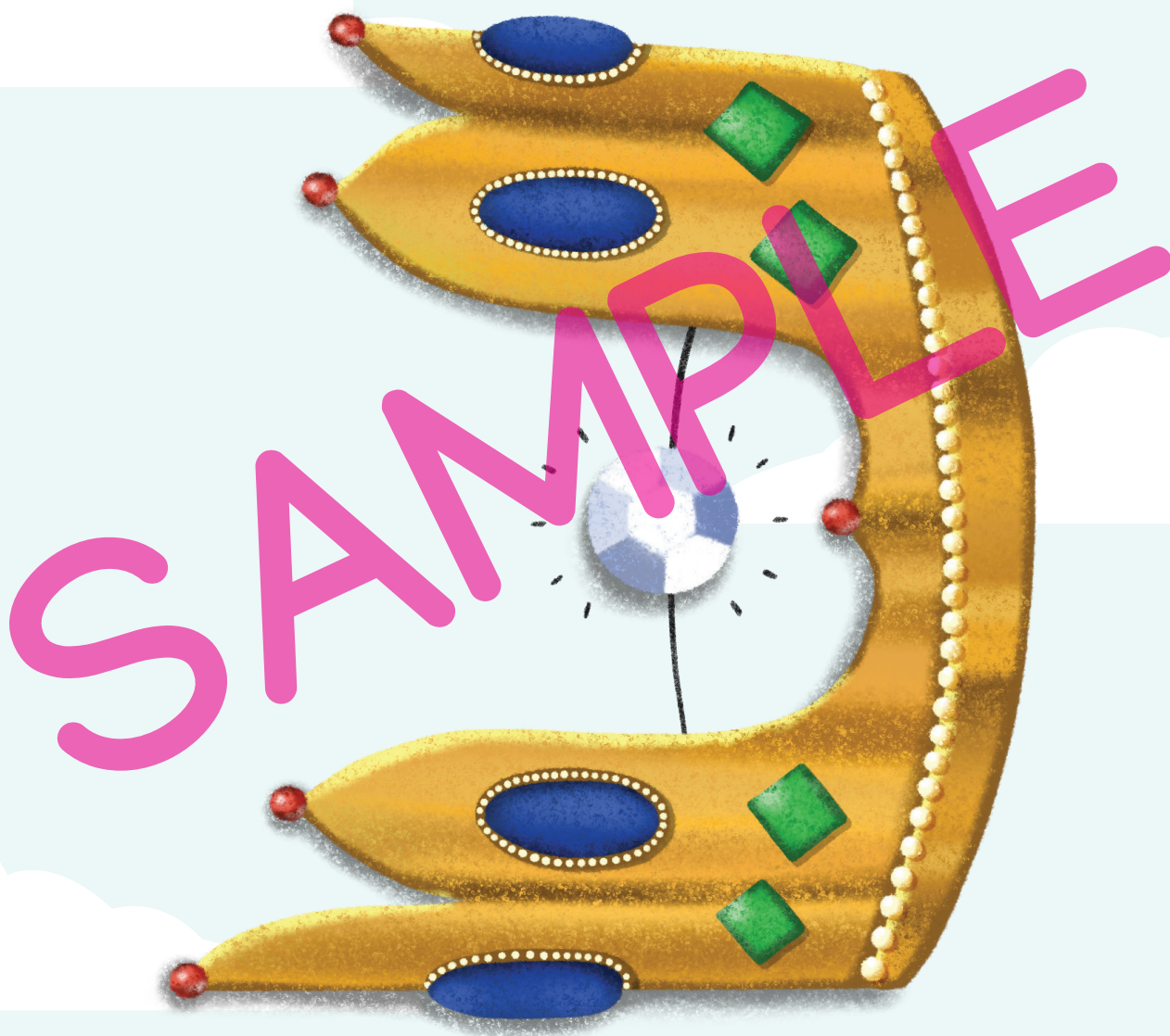
is like a



כּ

means like.

כּ kof	כֵּתֶר crown	לְרֹאשׁ king	יָד hand	כַּף spoon





A man is like a tree in the field.



מִצּוֹת כְּפֵרוֹת

תּוֹרָה כְּגִזַּע

אֱמוּנָה כְּשָׁרֶשׁ

תִּינוּק כְּפֹרֶעַ

Torah Source

...כִּי הָאָדָם עֵץ הַשָּׂדֶה...

—דְּבָרִים כ"ט



...man is like a tree in the field...

—Devarim 20:19



PREFIX: KOF

When the letter kof is attached to the beginning of a noun, it means 'like' that word. The prefix kof is taken from the word כְּמוֹ, which also means 'like'.

3	2	1
Word	Noun	Preposition
כַּעֵץ	עֵץ	כִּי-
like a tree	tree	like
<div> <div>  =  </div> <div> <p>אָדָם כְּמוֹ עֵץ.</p> <p>אָדָם כַּעֵץ.</p> </div> </div>		

אָרְמוֹן



Read text from Pirkei Avot.

הָיוּ

Yehuda ben
Teima said:

"Be bold as
a leopard,



light as
an eagle,



fleeting
as a deer,



and mighty
as a lion,



to do the will of your
Father in Heaven."

יְהוּדָה בֶּן
תֵּימָא אָמַר,

"הָיוּ עֹז כַּנֶּמֶר,

וְקֵל כַּנְּשָׁה,

רָץ כַּצֶּבִי,

וְגִבּוֹר כַּאֲרִי,

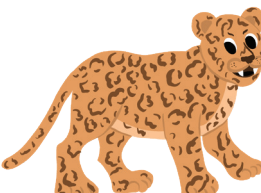
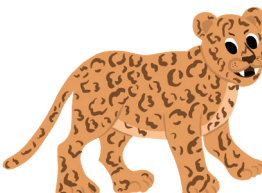
לַעֲשׂוֹת רְצוֹן

אָבִיךָ שְׁבַשְׁמַיִם."

PREFIX: WHEN KOF MEANS 'LIKE THE'

When the prefix kof has a kamatz or patach, it means 'like the'. The kamatz or patach takes the place of a hey.

$$\text{כֹּף} = \text{כֹּף} + \text{הֶ}$$

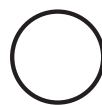
3	2	1
▲ ▲ ◡	▲	▲ ◡
כֹּפֶּנֶם	נֶמֶר	כֹּף
 <small>like the leopard</small>	 <small>leopard</small>	<small>like the</small>

► כֹּף also means "like the".

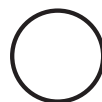
עוֹ כֹּפֶּנֶם



הַסֵּבֵא שָׁם אֶת הַתּוֹרָה
בְּאֵרוֹן הַקֹּדֶשׁ.



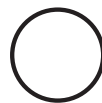
אֵרוֹן הַקֹּדֶשׁ יָרֵק.



טוֹבָה אוֹכֵלֶת תֵּאֲנֶה.



טוֹבָה כּוֹתֶבֶת שְׁמָה.



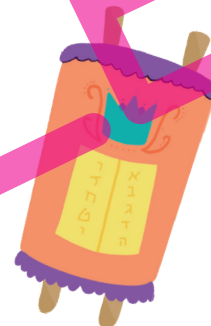
הַיְלָדָה נושאת¹ דָגֵל. ☐



הַיְלָדָה עוֹבֶרֶת עַל הַגֶּשֶׁה. ☐

לַתּוֹרָה יֵשׁ כָּתָר כָּחֹל. ☐

לַתּוֹרָה יֵשׁ אֲרִיָּה שָׁחַר. ☐



1: carries





cholam



© 2023 by HebrewScouts®

This guide is part of a full Hebrew reading curriculum. Check it out at hebrewscouts.com



לה"ו
THIS CHOLAM GUIDE
BELONGS TO: